

# Innovation First, Inc.

## (75 MHz) VEX Field Control Software and Driver Installation



## Table of Contents

1. (75 MHz) VEX Field Control Software Install .....	2
2. CP210x Driver Installation .....	4
3. Operation .....	7
4. Debugging the Installation .....	8

## 1. (75 MHz) VEX Field Control Software Install

This document is for the (75 MHz) **VEX Field Controller** software and drivers only. These are newer drivers than the initial release of the (75 MHz) VEX Field Controller software. As of the date of release of this document, the CP210x drivers installed by this document are identical to those supplied with the Pier 13 tournament manager software.

DO NOT ATTACH the Vex Robotics Field Control Board to the PC at this time.

Insert the “Vex-f-c-sw-e” CD into the PC. For best results, copy the CD contents to a known location on your hard drive. You can then remove the CD.

VISTA Installations only: Go to that location and open the “75MHz-vex-field-control” directory and RIGHT CLICK on “setup.exe”. Select “Properties”, then “Compatibility” tab. Click the box to show a check mark for “Run this program in compatibility mode for:”. Verify the pull-down is selected for “Windows XP (Service Pack 2)”. Click on “Apply”, then “OK”. Then double click on “setup.exe”.

XP Installations only: Go to that location and open the “75MHz-vex-field-control” directory and double click on “setup.exe”.

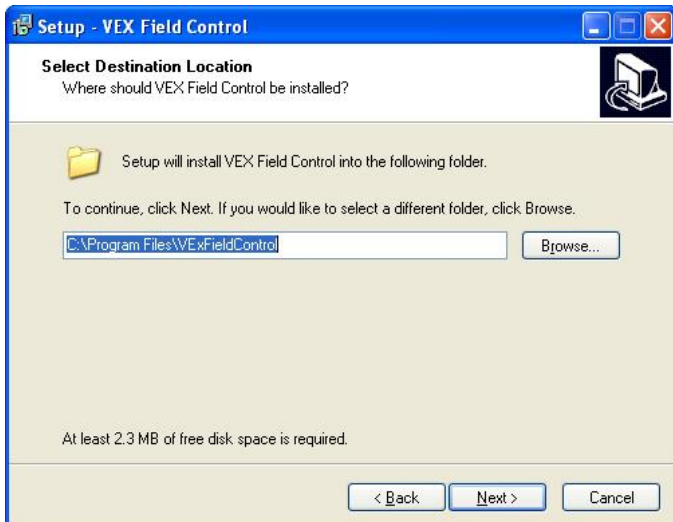
Click on “Next” in the window as shown.



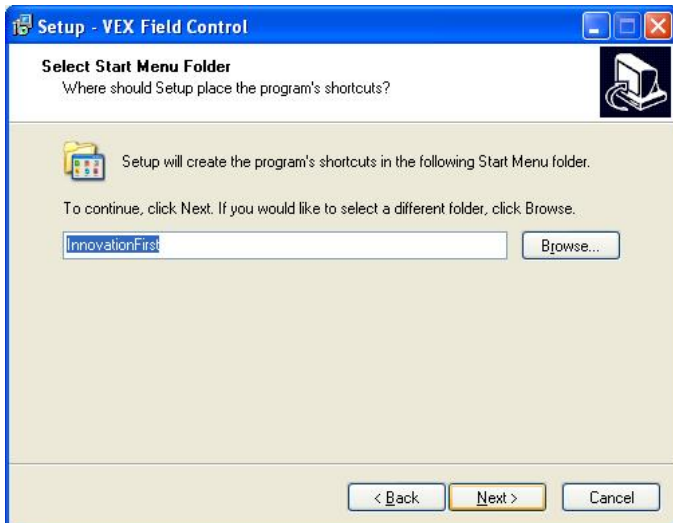
Click on “Next” in the window as shown to install in the default location shown.



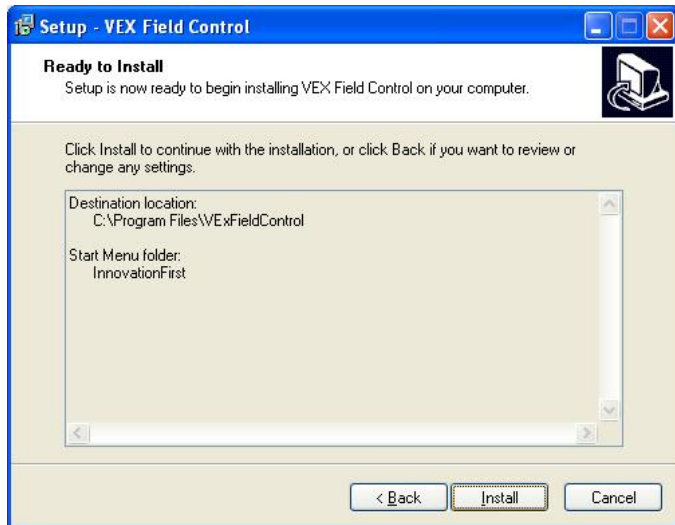
Click on “Next” in the window as shown to install in the default location shown.



Click on “Next” in the window as shown.



Click on “Install” in the window as shown.



The VEX Field Control software is now installed. Click on “Finish” in the window as shown.



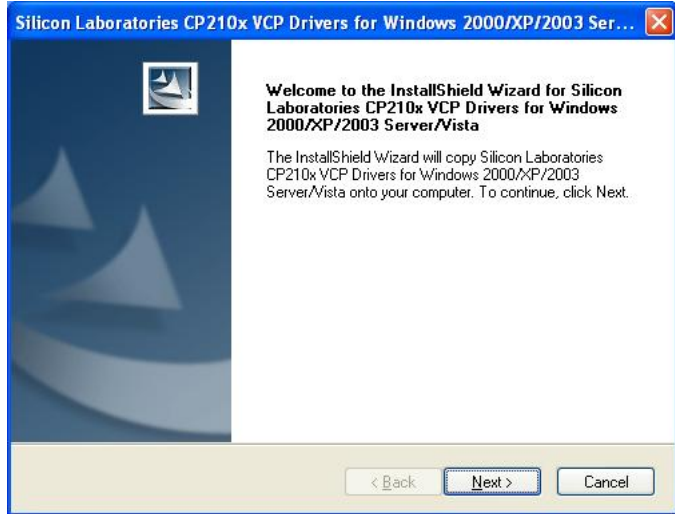
## 2. CP210x Driver Installation

Go up one directory then double click on the “cp210x” directory.

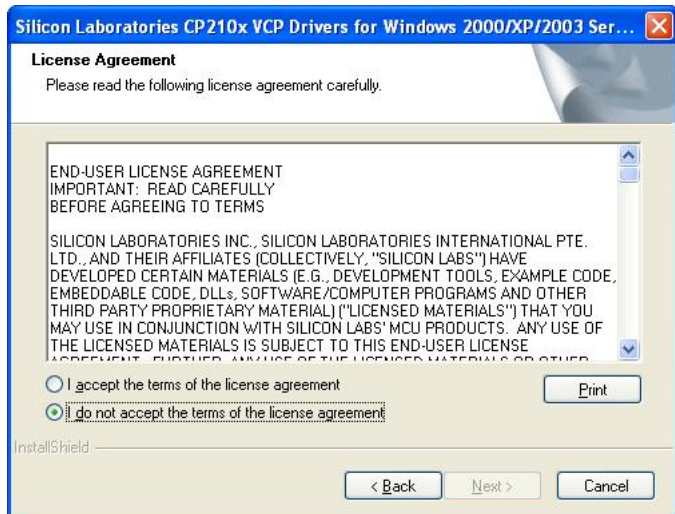
VISTA Installations only: RIGHT CLICK on “CP210x\_VCP\_Win2K\_XP\_S2K3.exe”. Select “Properties”, then “Compatibility” tab. Click the box to show a check mark for “Run this program in compatibility mode for:”. Verify the pull-down is selected for “Windows XP (Service Pack 2). Click on “Apply”, then “OK”. Then double click on “CP210x\_VCP\_Win2K\_XP\_S2K3.exe”.

XP Installations only: Double click on “CP210x\_VCP\_Win2K\_XP\_S2K3.exe”.

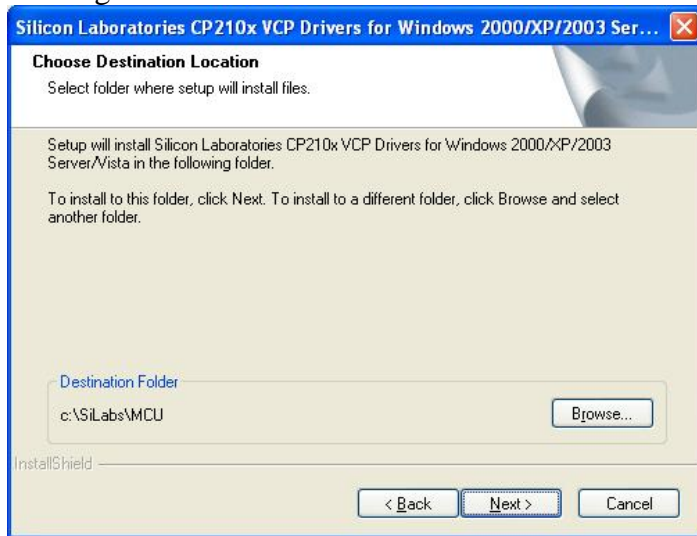
It will start an InstallShield Wizard. Click on “Next>”.



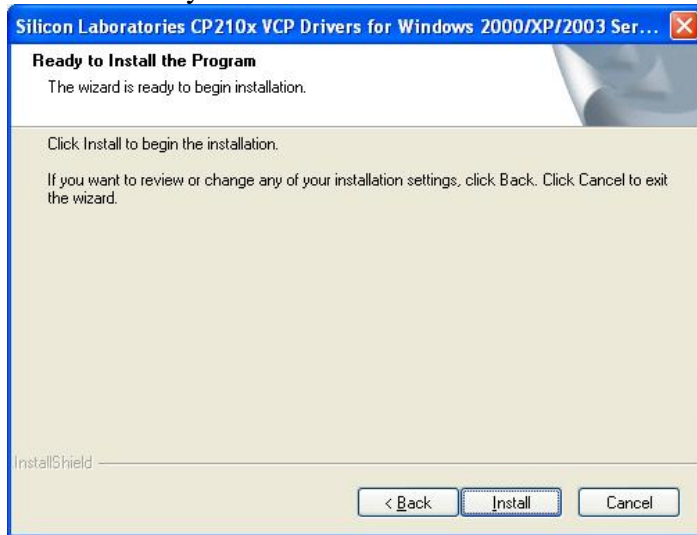
Read the license agreement. If acceptable, click “I accept the terms of the license agreement” and click “Next”.



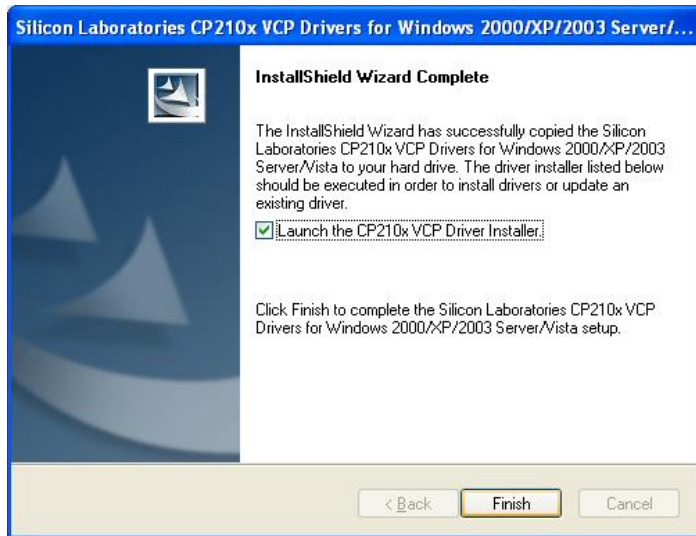
It will ask you where to install the program. Install in the default location “C:\SiLabs\MCU” by clicking “Next>”.



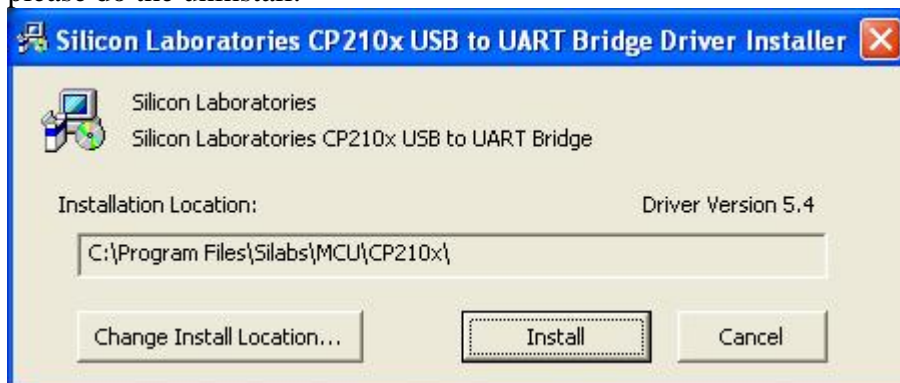
It will be ready for the driver install. Click “Install”.



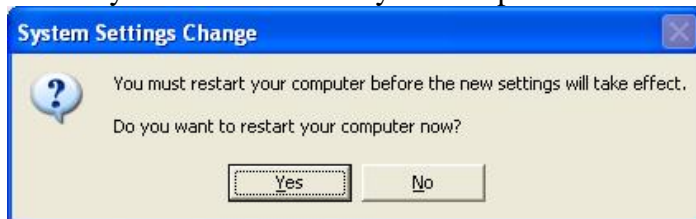
It will be ready to finish the VCP Driver install. Leave the “Launch the CP210x VCP Driver Installer” check-box checked and click “Finish”.



It will be ready for the Bridge Driver install. Click “Install”. If you are asked to uninstall old drivers, please do the uninstall.



You may be asked to reboot your computer. Click “Yes”.



After your computer reboots, you may attach the VEX Robotics Field Control Board to your PC with a USB cable. The driver installation will proceed. You will then be ready to operate the VEX Field Control Board with the (75MHz) VEX Field Control software.

### 3. Operation

Refer to the VEX Field Controller User guide.

#### 4. Debugging the Installation

If you have problems with the driver installation, first uninstall the drivers / programs.

Click on “start”, “Control Panel”, “Add or Remove Programs”, “Field Control 1.0.1”, and “Change / Remove”.

Click on “start”, “Control Panel”, “Add or Remove Programs”, “Silicon Laboratories CP210x USB to UART Bridge (Driver Removal)”, and “Change / Remove” and “Uninstall”.

Click on “start”, “Control Panel”, “Add or Remove Programs”, “Silicon Laboratories CP210x VCP Drivers for Windows 2000/XP/2003 Server/Vista”, and “Remove”, “Remove”, “Next>”, “OK”, and “Finish”.

Also may also uninstall any legacy control systems, such as the Vex Arena Controller.

Then reinstall the drivers. The version of CP210x drivers known to work with the **Vex\_Arena\_Controller** software is Silicon Laboratories 5.4.0.0, dated 12/10/2008.

For **Pier 13 VEX Tournament Management** software help please refer to Pier 13 documentation or personnel.

The drivers installed by this procedure have been shown not to work with the old Vex Arena Controller software. They are the same drivers as installed by the VEXnet Field Control system.

#### Appendix A: Document Version History

<u>Date</u>	<u>Code</u>	<u>Changes</u>
-------------	-------------	----------------

2009-08-14		Initial document release.
------------	--	---------------------------